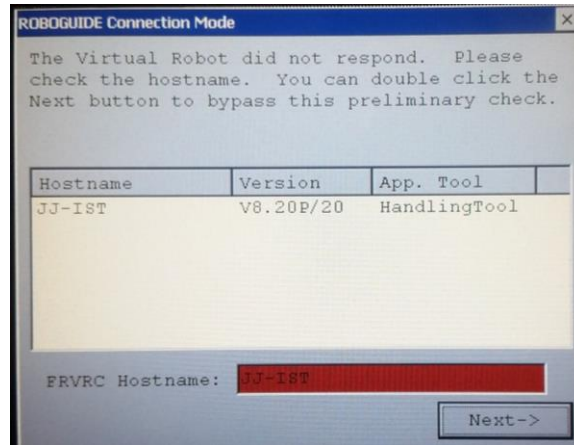


## Error Recovery Procedure for FANUC Teach Pendant Connectivity

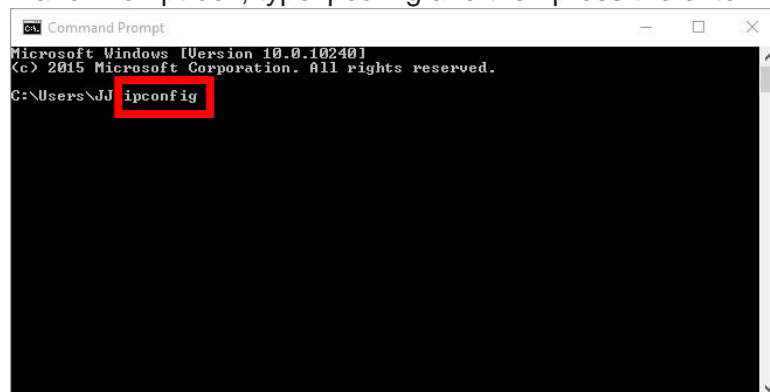
**Error:** FANUC Teach Pendant will not connect to RoboGuide for Offline Programming.



**Remedy:** Use the computers IP Address instead of the Computer Name.

### Step to perform remedy:

1. Get the computers IP Address
  - a. In your Windows Search bar (*Windows 7 – Click on Start in the bottom left corner of the screen and a search box will appear, Windows 8 – On the Start Page, click on the magnify glass in the top right corner of the screen, Windows 10 – From the search box in the bottom left corner of the screen*) type CMD and then the enter key to bring up the Command Prompt box.
  - b. In the Command Prompt box, type ipconfig and then press the enter key.



- c. In the Ethernet Adapter section, there will be a IPv4 Address (ie. 169.254.101.101), make note of this address. (Do not use the Wireless LAN Adaptor section as this is not the correct address that is needed)

```

Command Prompt

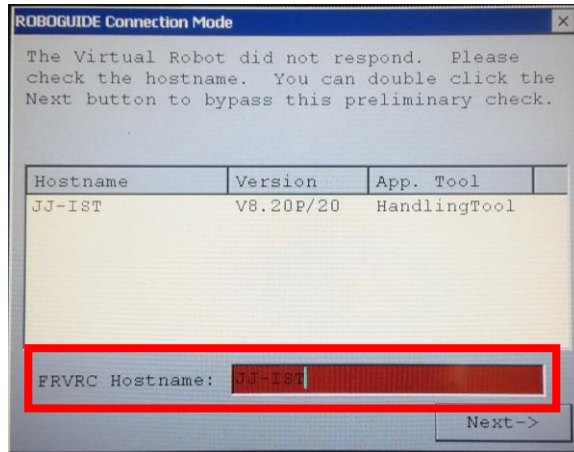
Ethernet adapter Ethernet:
    Connection-specific DNS Suffix  . : 
    Link-local IPv6 Address . . . . . : fe80::1869:5237:59fa:8b216
    IPv4 Address. . . . . : 169.254.101.101
    Subnet Mask . . . . . : 255.255.0.0
    Default Gateway . . . . . : 

Wireless LAN adapter Wi-Fi:
    Connection-specific DNS Suffix  . : Cisco
    Link-local IPv6 Address . . . . . : fe80::5581:170b:4df:8377216
    IPv4 Address. . . . . : 192.168.1.169
    Subnet Mask . . . . . : 255.255.255.0
    Default Gateway . . . . . : 192.168.1.1

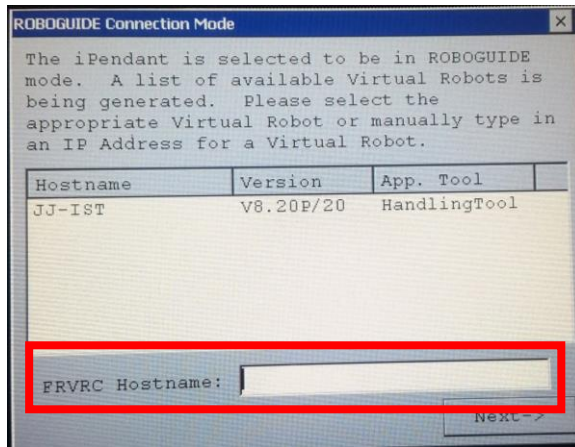
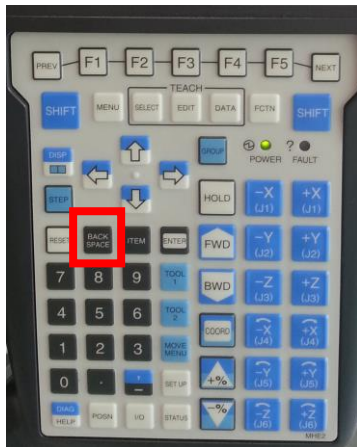
Ethernet adapter Bluetooth Network Connection:
    Media State . . . . . : Media disconnected
    Connection-specific DNS Suffix  . : 

Tunnel adapter isatap.Cisco:
    Media State . . . . . : Media disconnected
  
```

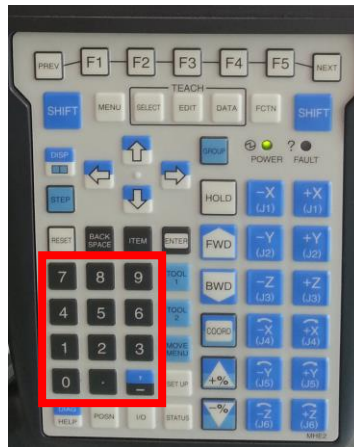
2. On the Teach Pendant, touch the FRVRC Hostname box on the screen so that a cursor appears.



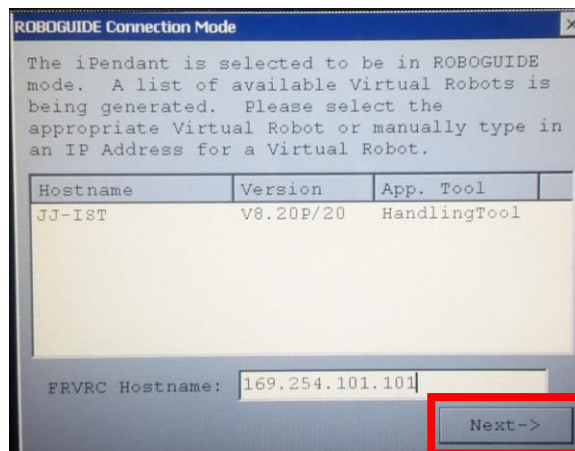
3. Using the Backspace button on the Teach Pendant, remove all the characters in the FRVRC Hostname box.



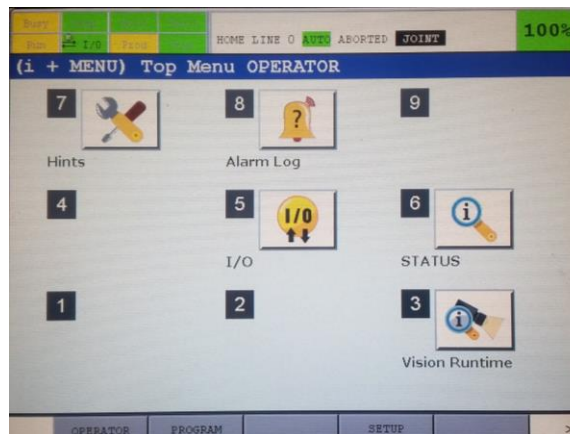
4. Using the keypad on the Teach Pendant, type in the IP Address noted in Step 1.



5. Press the Next button on the screen



6. A blank white screen may appear, after about 10 – 15 seconds, the Teach Pendant should connect and you should see a screen like below.



7. The Teach Pendant is not connected and ready to be used with RoboGuide.